



# **Identifying Pediatric Mental Health Community Resources**

Children Come First Conference: November 11, 2015

Presented by:  
Wisconsin Medical Home Initiative

# Children's Health Alliance of Wisconsin



WISCONSIN  
**ASTHMA**  
COALITION

★Children's Health  
Alliance of Wisconsin



Emergency Medical  
Services for Children  
**WISCONSIN**

★Children's Health  
Alliance of Wisconsin



Infant  
Death  
Center

★Children's Health  
Alliance of Wisconsin



**Keeping  
Kids Alive**  
IN WISCONSIN

★Children's Health  
Alliance of Wisconsin



WISCONSIN  
**Medical  
Home**

★Children's Health  
Alliance of Wisconsin



WISCONSIN  
**Oral Health**  
COALITION

★Children's Health  
Alliance of Wisconsin



**WISCONSIN**

★Children's Health  
Alliance of Wisconsin



WISCONSIN  
**Medical  
Home**

★ Children's Health  
Alliance of Wisconsin

# Screening and Surveillance

AAP's proposed routine mental health screening frequency

- **0-5 years**

After concerning general developmental screener at 9-, 18-, and 24- (or 30-) months of age

- **School age**

At health maintenance exams

- **Additionally in adolescence**

Substance use at health maintenance exams

- **All ages:** Any time surveillance is concerning

# Support from American Academy of Pediatrics (AAP)

- Policy Statement, *Mental Health Competencies for Pediatric Primary Care* (2009)
- *Addressing Mental Health Concerns in Primary Care: A Clinician's Toolkit* (2010)
- *Enhancing Pediatric Mental Health Care*- Task Force on Mental Health (2010)
- AAP's Mental Health Initiative web resources: [www.aap.org/mentalhealth](http://www.aap.org/mentalhealth)

# How do I find help?

- Families can identify needing support
- Physician at Well-Child Check
- Community Partner Agencies

# County Quick Reference Guides

Bayfield

Calumet

Chippewa

Forest

Kenosha

La Crosse

Manitowoc

Marathon

Milwaukee

Outagamie

Ozaukee

Portage

Racine

Rock

Washington

Waukesha

Waupaca

<http://www.wismhi.org/wismhi/Clinicians/Behavioral-Health-Integration/Pediatric-Mental-Health-Community-Resources/Quick-Reference-Guides>

# Core Services

- **Crisis Services**

- **Non-Crisis Services**

- Direct Therapeutic Intervention
- Related Interventions





# Direct Therapeutic Services

- Psychosocial Assessment and Treatment
- Specialized Counseling
  - Including Grief Counseling & Substance Abuse Counseling
- Medication Consultation or Management

# Direct Therapeutic Service Professionals

- County or Tribal Mental Health Agency Professional
- Licensed Mental Health Professional
- Licensed Mental Health Professional with specialized training
- Child Psychiatrist
- General Psychiatrist with pediatric expertise
- Psychiatric Nurse Practitioners

# Specialized Counseling Services

Grief Counseling  
Substance Abuse Counseling  
Domestic Violence Counseling  
Family Reunification & Medication  
Children of Alcoholics  
Juvenile Sex Offender

Divorce Counseling  
Stress Management  
Tobacco Cessation  
Art Therapy  
Marriage & Family Therapy  
Equine Therapy

# Infant & Early Childhood Mental Health Providers

Wisconsin Alliance for Infant Mental Health  
(WI-AIMH)

- Mental health services for children 0-5 years of age
- Providers submit their information to WI-AIMH

Resource directory by county

<http://wiaimh.org/wp-content/uploads/2014/04/Provider-Directory-by-Region2.pdf>

# How do I locate these services?

## **Mental Health America of Wisconsin**

<http://www.mhawisconsin.org/>

Under “Resource Directories,” can do “Therapist Search” according to:

- Area of expertise
- Payment accepted
- Primary clients served
- Practices within x mile radius of your clinic’s zip code

## **IMPACT 211**

<http://www.impactinc.org/impact-2-1-1/>

## **SAMHSA**

<http://findtreatment.samhsa.gov/MHTreatmentLocator/faces/addressSearch.jspx>

# Wisconsin First Step

Phone: 1-800-642-7837

[www.referweb.net/mchh](http://www.referweb.net/mchh)

**The Information & Referral Center — La Crosse Wisconsin**

Great Rivers 2-1-1, Maternal & Child Health Hotline, Wisconsin First Step

[Home](#)

[Search By Keyword](#)

[Search By Topics](#)

[My Resources](#)



## Welcome To The Information & Referral Center La Crosse Wisconsin

**Online access to community resources**

This site is an online directory of services designed to help you find resources in Wisconsin and parts of Minnesota and Iowa. The site includes information on regional and statewide hotlines including Great Rivers 2-1-1 and Wisconsin First Step. Click the Start a Search button to begin.

[Start a Search](#) ➔



### Special Topics



#### Children With Special Needs

Resources to help children and youth with special needs, their families, and service providers.



#### Older Adults And People With Disabilities

Resources to help older adults and people with disabilities.



#### Pregnant Women and Children

Programs available for pregnant women, children, and families.



#### Women's Health Issues

Health-related services for women of all ages.



### Take Me To ...

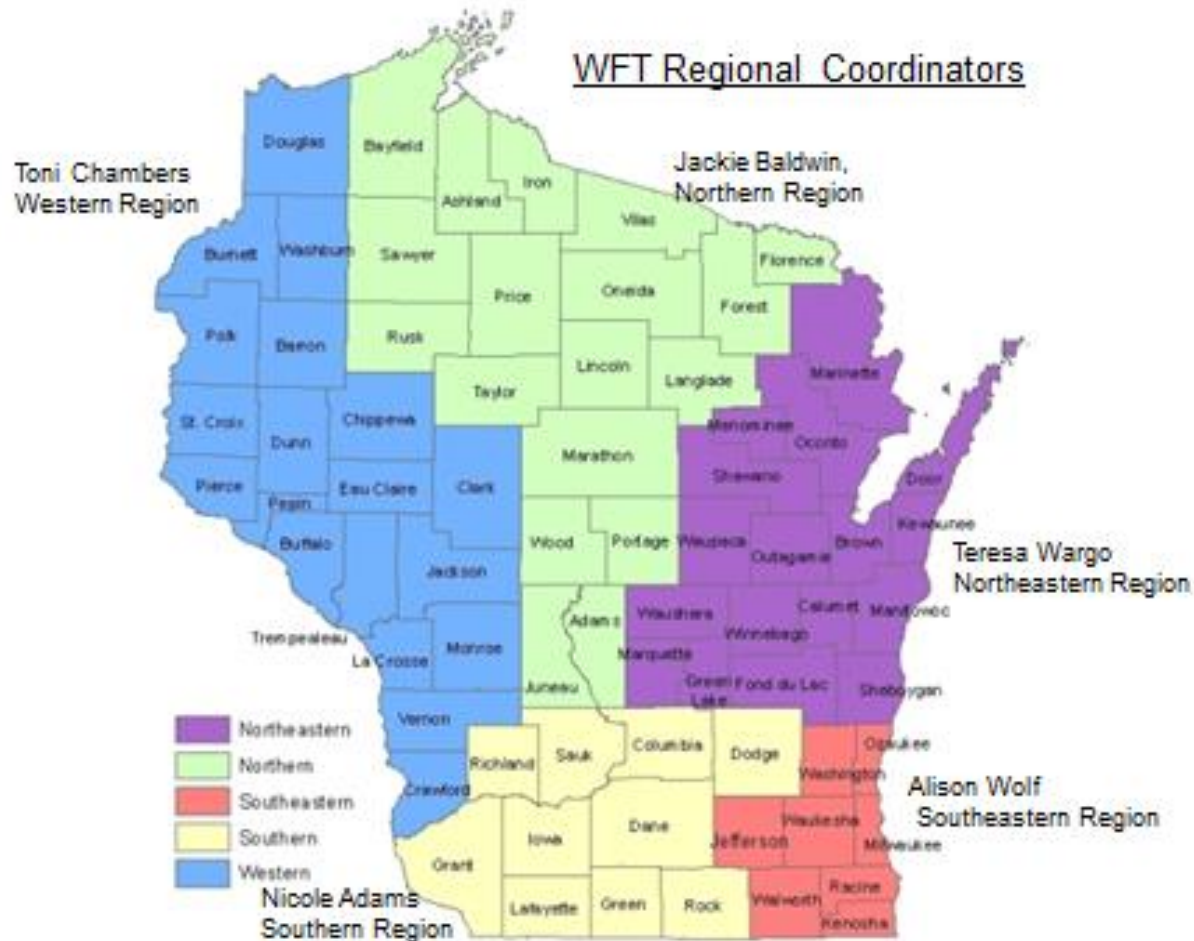
#### Wisconsin First Step Regional Directories

Download PDF versions of Wisconsin First Step Regional Directories.

#### Provider Portal

Used by Providers to keep their data up to date.

# Wisconsin Family Ties

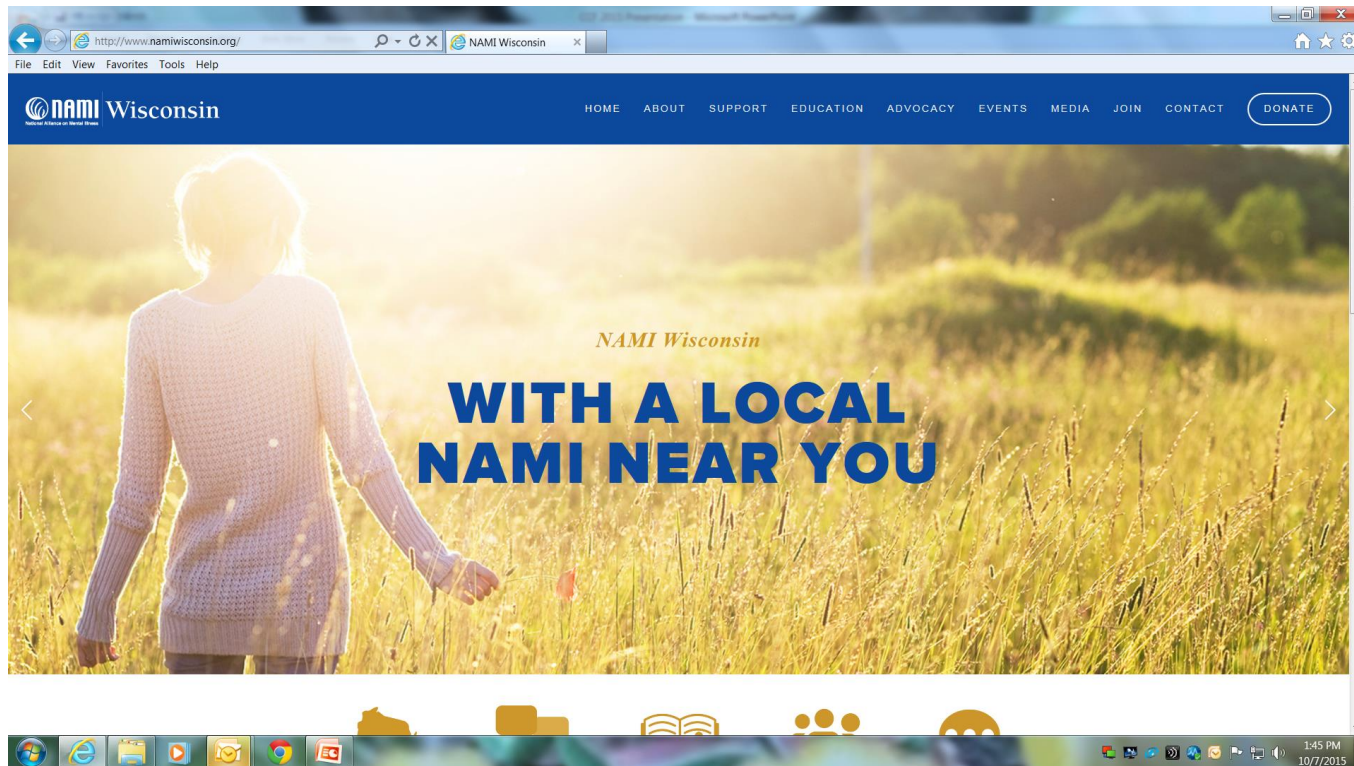




# National Alliance on Mental Illness (NAMI)

Phone: 1-800-236-2988

<http://www.namiwisconsin.org/>





# Related Intervention Services

- Care Coordination and Case Management
- Child Protective Services
- Early Intervention Services
- Early Childhood Special Education and Special Education
- Early Head Start and Head Start
- Parent Education and Support

# Care Coordination and Case Management

## **Care Coordination**

Care coordination is a process that facilitates the linkage of children and their families with appropriate services and resources in a coordinated effort to achieve good health

**Case management** is a collaborative process of assessment, planning, facilitation, care coordination, evaluation, and advocacy for options and services to meet an individual's and family's comprehensive health needs through communication and available resources to promote quality, cost-effective outcomes.

*AAP's Care Coordination in the Medical Home: Integrating Health and Related Systems of Care for Children With Special Health Care Needs, 2005*

*Case Management Society of America*

# Child Protective Services (CPS)

<http://dcf.wisconsin.gov/children/cps/cpswimap.htm>

The screenshot shows the Wisconsin Department of Children and Families website. The header includes the department's logo and name, a search bar, and navigation links: Find Child Care, Report Fraud, Become a Foster Parent, and Report Child Abuse. Below the header is a navigation menu with links: Home, About Us, Family Resources, Reports & Data, Press Room, and Partner Resources. The main content area is titled "Reporting Child Abuse and Neglect" and contains text explaining how to report abuse or neglect. A map of Wisconsin is displayed, with counties labeled. A "County Listing:" section is visible below the map, listing counties: Adams, Ashland, Barron, Bayfield, Brown, and Buffalo. On the right side, there is a "Children Quick Links:" section with a list of links: Home, Adoption, Adoption Records Search, Child Protective Services, Child Welfare Licensing Section, Child Welfare Program, Child Welfare Training System, Domestic Violence, Foster Care, Interstate Compact on the Placement of Children (ICPC), Independent Living, Indian Child Welfare, Kinship Care, Safe & Stable Families, Paternal Interest (Putative Father) Registry, Subsidized Guardianship, Title IV-E, Child Welfare Complaint Procedure, and Contact Us. The bottom of the page shows a Windows taskbar with various icons and the system clock displaying 10:11 AM on 10/22/2015.

# Sources for Early Intervention Services



## In Wisconsin Early Intervention is Birth to 3

- Evaluation for program eligibility
  - Child evaluated in 5 developmental areas
  - Child will **not** be given medical diagnosis
- Eligibility criteria
  - At least 25% delay in one area of development or atypical development
  - OR a diagnosis with high probability of resulting in developmental delays

# Birth to 3



## State Contact Information

Wisconsin Department of Health Services  
Birth to 3 Program

<http://www.dhs.wisconsin.gov/children/birthto3/>

County Birth to 3 Programs

<http://www.dhs.wisconsin.gov/children/birthto3/contacts/countycontacts.asp>

# Sources for Early Childhood Special Education



- Conduct educational assessments
- Serve children aged 3-5 years with significant developmental delays or disabilities
- Located in local public school system
- Contact child's neighborhood school (where child would start kindergarten)

[http://ec.dpi.wi.gov/ec\\_ecspedhm](http://ec.dpi.wi.gov/ec_ecspedhm)

# Early Head Start & Head Start

## •Early Head Start

-Serves low-income families that include

Pregnant mothers

Children ages 0-3

-Provides

Prenatal care

Early childhood developmental services

Referrals for medical and dental care

Social service programs

## •Head Start

—Serves low income families that include

Children ages 3 to 5

—Provides

Early childhood education

Referrals to medical and dental care

Social services programs



# Early Head Start & Head Start

To apply for Early Head Start & Head Start

- Children must be the appropriate age for the selected program
- Families must meet federal income guidelines
- Use zip code to identify nearest Head Start location
- Contact that center to schedule an application appointment

To find a program near you:

<http://eclkc.ohs.acf.hhs.gov/hslc/HeadStartOffices>



# Parent Education & Support

**Wisconsin FACETS** <http://www.wifacets.org/>

**UW- Extension Parent Education** <http://parenting.uwex.edu/>

## **Mental Health-Specific Resources**

**Mental Health America of WI**

<http://www.mhawisconsin.org/>

**National Alliance on Mental Illness (NAMI) of Wisconsin**

<http://www.namiwisconsin.org/>

**Wisconsin Family Ties**

<http://www.wifamilyties.org/>

# Parent to Parent of Wisconsin

Links parents of children & youth living with chronic conditions


Phone: 715-361-2890 or 888-266-0028

FAX 715-361-2892


[email: Get-Connected@p2pwi.org](mailto:Get-Connected@p2pwi.org)

<http://www.p2pwi.org/>





## Parent to Parent of Wisconsin



### Provides **Parent Matching**

- A statewide network of families who support each other on the journey of parenting children with special health care needs

888-266-0028 • [www.p2pwi.org](http://www.p2pwi.org)

# Condition-Specific Resources

Children and Adults with Attention Deficit/Hyperactivity Disorder

<http://www.chadd.org/>

Behavior/Conduct

<http://www.aacap.org/cs/ConductDisorder.ResourceCenter>

Anxiety & Depression

<https://www.adaa.org/living-with-anxiety/children/tips-parents-and-caregivers>

Al-ANON

<http://www.alanon-wi.org/>

Autism

[http://www.asw4autism.org/other\\_support\\_groups.html](http://www.asw4autism.org/other_support_groups.html)

Tourette's Syndrome

<http://www.tsa-usa.org/>

# Regional Centers for Children & Youth with Special Health Care Needs

## *Information and Referral Centers*

Offer parents information on

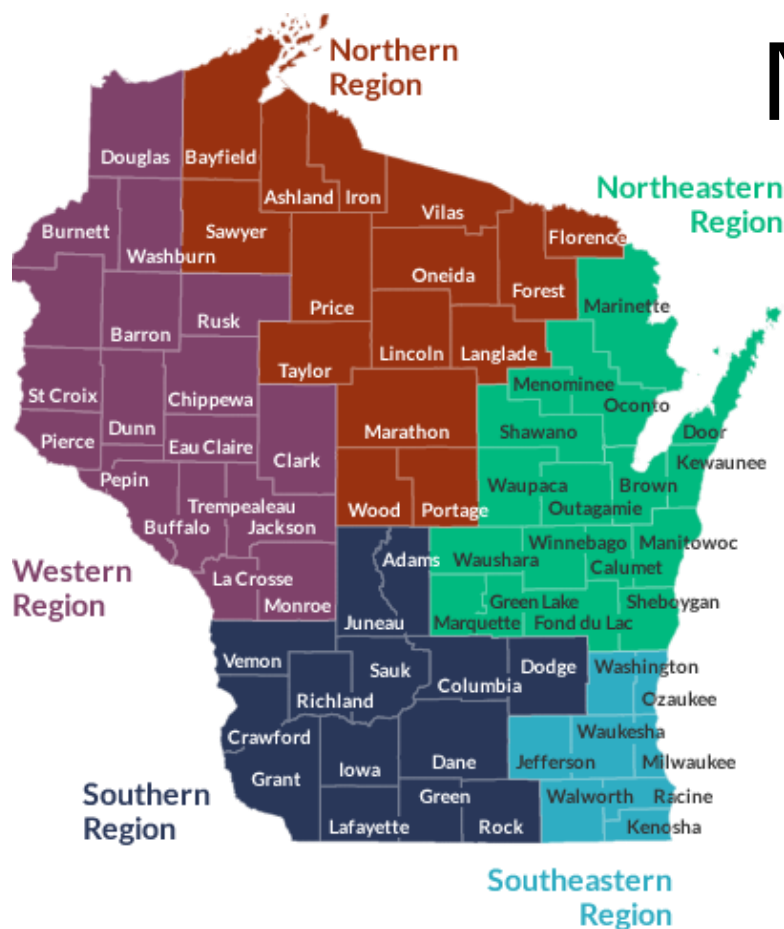
- Child's special health care needs
- Relevant services in the community for which their child may be eligible

Offer parents assistance with

- Locating doctors and dentists
- Communicating with school special education services professionals
- Accessing health benefits
- Accessing parent-to-parent support



# Regional Centers for Children & Youth with Special Health Care Needs



- **Northern Regional Center**  
Phone: 866-640-4106
- **Northeast Regional Center**  
Phone: 877-568-5205
- **Southeast Regional Center**  
Phone: 800-234-KIDS (5437)
- **Southern Regional Center**  
Phone: 800-532-3321
- **Western Regional Center**  
Phone: 800-400-3678

# Youth Transition into Adult Care

Health Transition Wisconsin: <http://www.healthtransitionwi.org/>

**HEALTH TRANSITION WISCONSIN**  
SUPPORTING YOUTH TO ADULT HEALTHCARE

To view or download a copy of Transition Health Care Checklist: Preparing for Life as an Adult, go to <http://www.waisman.wisc.edu/wrc/pub.html>

Family Voices of Wisconsin: <http://fvofwi.org/>



# Thank you for your time

Naomi Westerman, CAPSW  
Outreach Coordinator  
Office: 608-442-4176  
[nwesterman@chw.org](mailto:nwesterman@chw.org)

Molly McGregor, CAPSW  
Outreach Coordinator  
Office: 920-969-5322  
[MMcGregor@chw.org](mailto:MMcGregor@chw.org)

Or visit us at: [www.wismhi.org](http://www.wismhi.org)



WISCONSIN  
**Medical  
Home**

★ Children's Health  
Alliance of Wisconsin